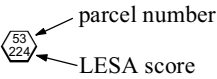


Agricultural Lands

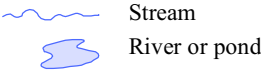
Town of Halifax, Vt.

October 2018

1988 Land Evaluation
and Site Assessment results:



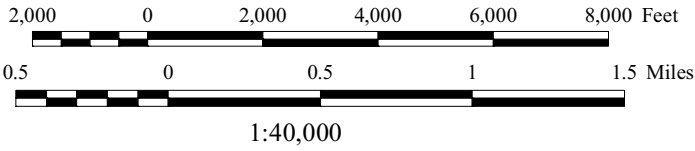
Important farmland soil rating:

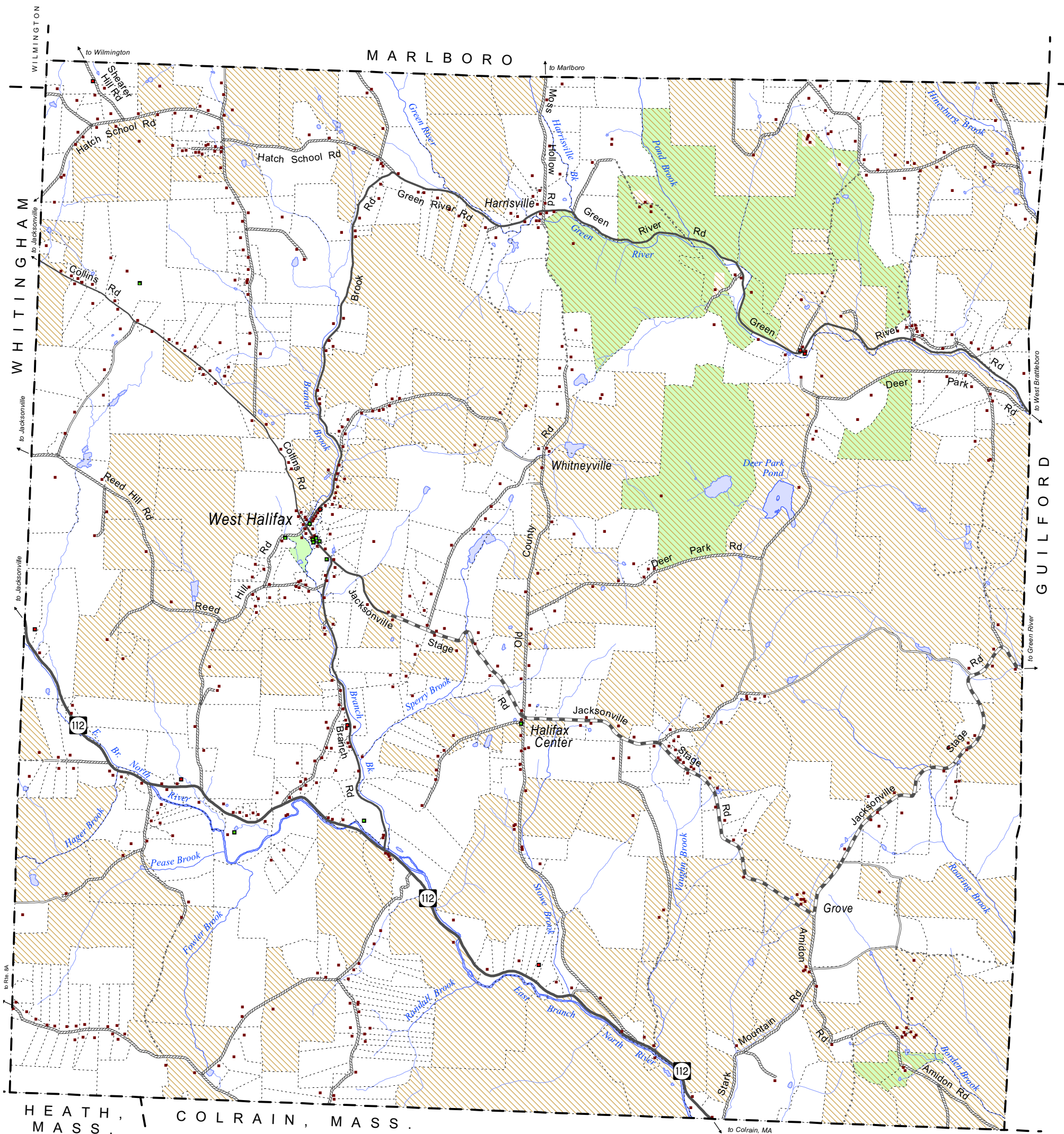


Data sources:

- Agricultural soil delineations are taken from the VGIS data layer SOAG, Prime Agricultural Soils in Vermont. These data were derived from U.S. Department of Agriculture, Natural Resources Conservation Service, SSURGO soil data.
- Farm parcel numbers and LESA scores are taken from a 1988 Halifax Agricultural Lands map that was developed from a 1988 Land Evaluation and Site Assessment (LESA) study.

WINDHAM REGIONAL COMMISSION
139 Main St • Suite 505 • Brattleboro, VT 05301
(802) 257-4547 www.windhamregional.org

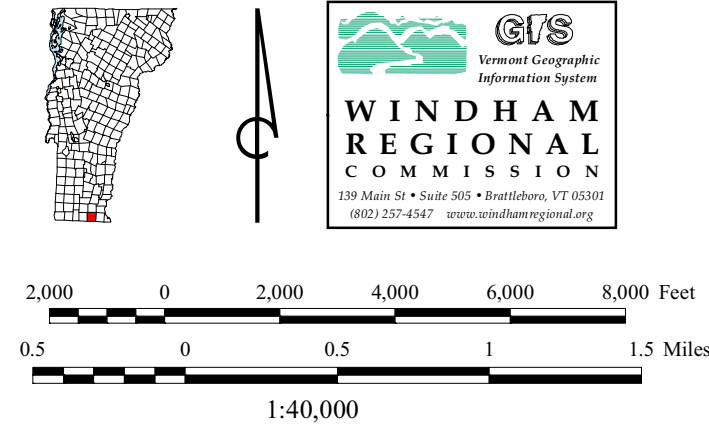




Existing Land Use

Town of Halifax, Vt.

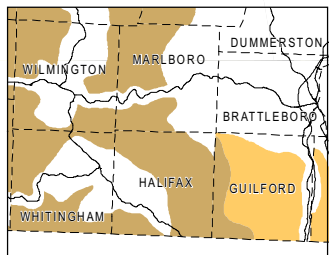
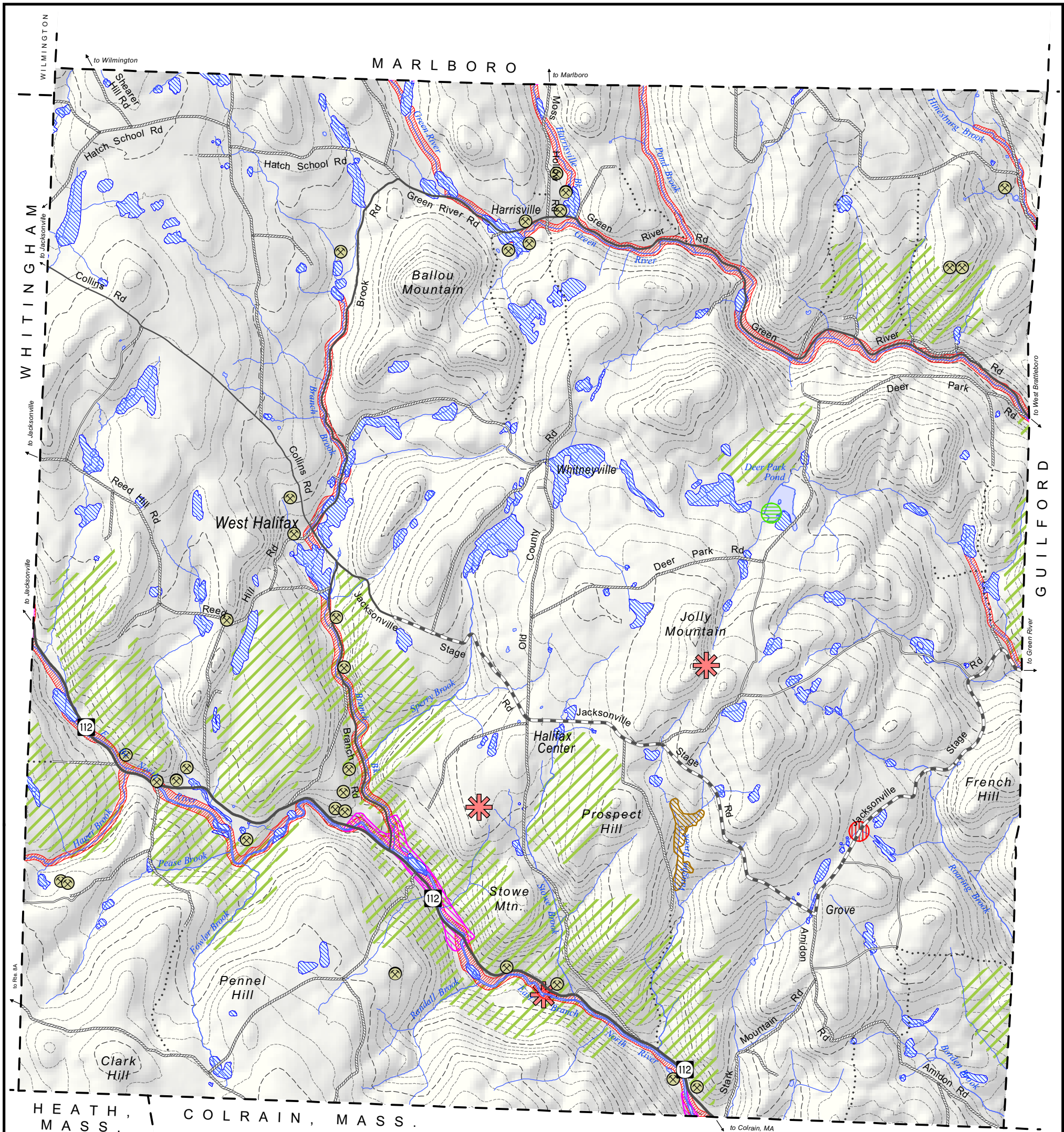
October 2018



- Commercial structure
- Public/Institutional structure
- Residential or other structure
- Parcel line, 2017
- Parcel enrolled in UVA, 2016
- Conservation easement
- State highway
- Class 2 town highway - paved
- Class 2 town highway - (unpaved)
- Class 3 town highway - paved
- Class 3 town highway - unpaved
- Class 4 town highway (unpaved)
- Legal Trail
- Private road/drive
- Stream
- River or pond

Data sources:

- Building locations are extracted from the VGIS data layer ESITE, originally captured using Global Positioning System technology for the Vermont Enhanced 9-1-1 project. Data are current to 2018.
- Parcel lines were originally developed by Dan Menery, former lister for the Town of Halifax, and have been updated by Diana Todd. Data current to 2017.
- Parcels with conservation easements were identified from Vermont Land Trust data.
- Parcels enrolled in Use Value Appraisal were extracted from the Town of Halifax parcel data by WRC using data provided by the Vermont Department of Taxes.



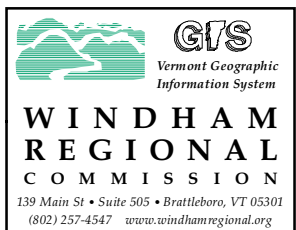
Bear habitat, Halifax and vicinity:

- Bear production habitat
- Seasonal bear habitat

Natural Resources

Town of Halifax, Vt.

October 2018



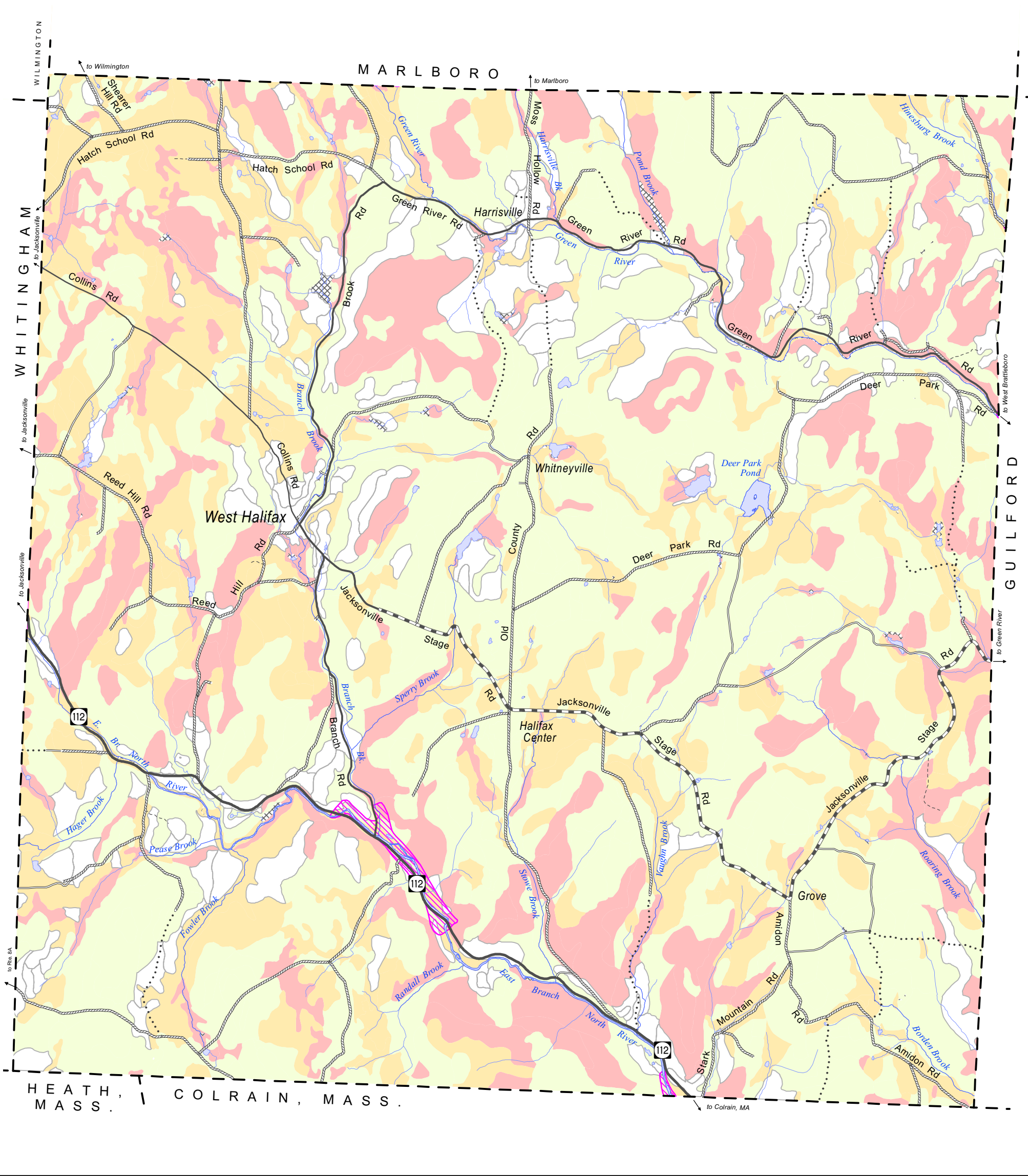
- Gravel pits (active and inactive)
- Rare plant occurrence
- Rare vertebrate occurrence
- Significant natural community
- Wetland
- Deer wintering area
- Natural area *
- Special flood hazard area
- Mapped river corridor
- 250' contour line
- 50' contour line

- Stream
- River or pond

Data sources:

- Locations of rare species and significant natural communities were determined from VT ANR Department of Fish and Wildlife, Nongame and Natural Heritage Program's Rare, Threatened and Endangered Species and Significant Natural Communities database. The data used are current to January 2018. Locations are approximate, but generally within 500 feet. For further information, contact the Nongame and Natural Heritage Program.
- Wetlands are those included in the Vermont Significant Wetlands Inventory (VGIS data layer VSWI) as of 2010. These wetlands are those that were in the original VSWI data, as well as those from National Wetlands Inventory (NWI) maps. These data show approximate locations of wetlands that are generally 3 acres or larger.
- Special Flood Hazard Area boundaries (i.e. "the 100-year floodplain") are from FEMA (Federal Emergency Management Agency) D-FIRM (Digital Flood Insurance Rate Map) data effective July 27, 2007.
- Deer wintering areas are taken from the VGIS data layer DEERWN. They were delineated by VT ANR, Department of Fish and Wildlife, and have been updated to a limited extent through 2010.
- Gravel pit locations were taken from 1988 Halifax Town Plan maps.
- Natural areas are designated by the Town of Halifax.
- Bear habitat is from a statewide database created by VT ANR Department of Fish and Wildlife.
- Statewide River Corridors are from VT ANR Rivers Program 2015 data (VGIS data layer RIVERCORRIDORS).
- Contour lines were generated from Digital Terrain Models by WRC.

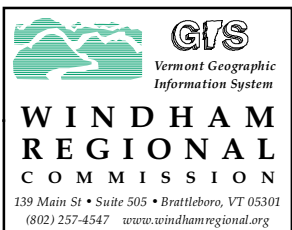
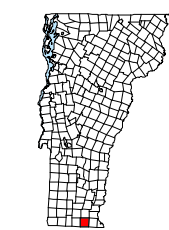
* - indicates a Town of Halifax designation



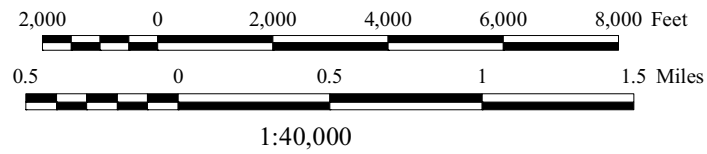
Physical Limitations to Development

Town of Halifax, Vt.

October 2018



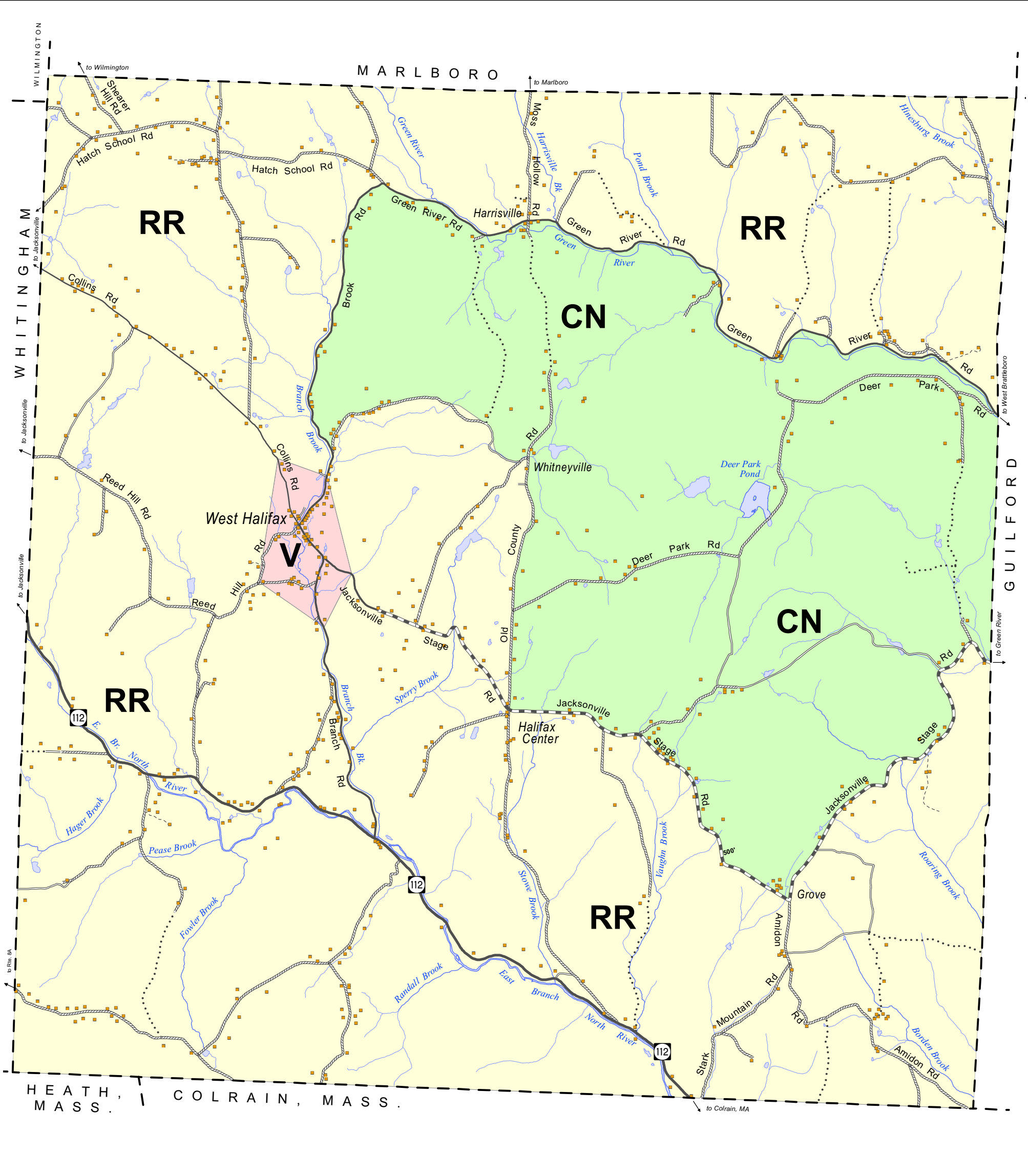
- Special flood hazard area
- On-site sewage disposal ratings:
- well suited
 - moderately suited
 - marginally suited
 - not suited
 - not rated



- Stream
- River or pond

Data sources:

- Onsite sewage disposal ratings are based on Vermont Environmental Protection Rules, August 16, 2002. These ratings have been mapped using U.S. Department of Agriculture, Natural Resources Conservation Service, SSURGO soil data.
- Special Flood Hazard Area boundaries (i.e. "the 100-year floodplain") are from FEMA (Federal Emergency Management Agency) D-FIRM (Digital Flood Insurance Rate Map) data effective July 27, 2007.



Proposed Land Use

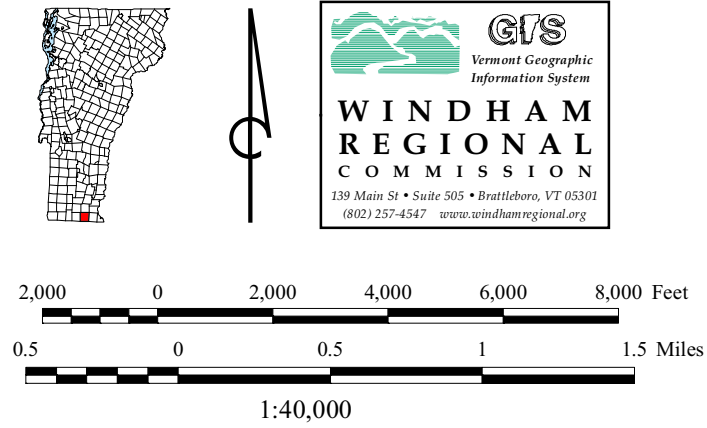
Town of Halifax, Vt.

October 2018

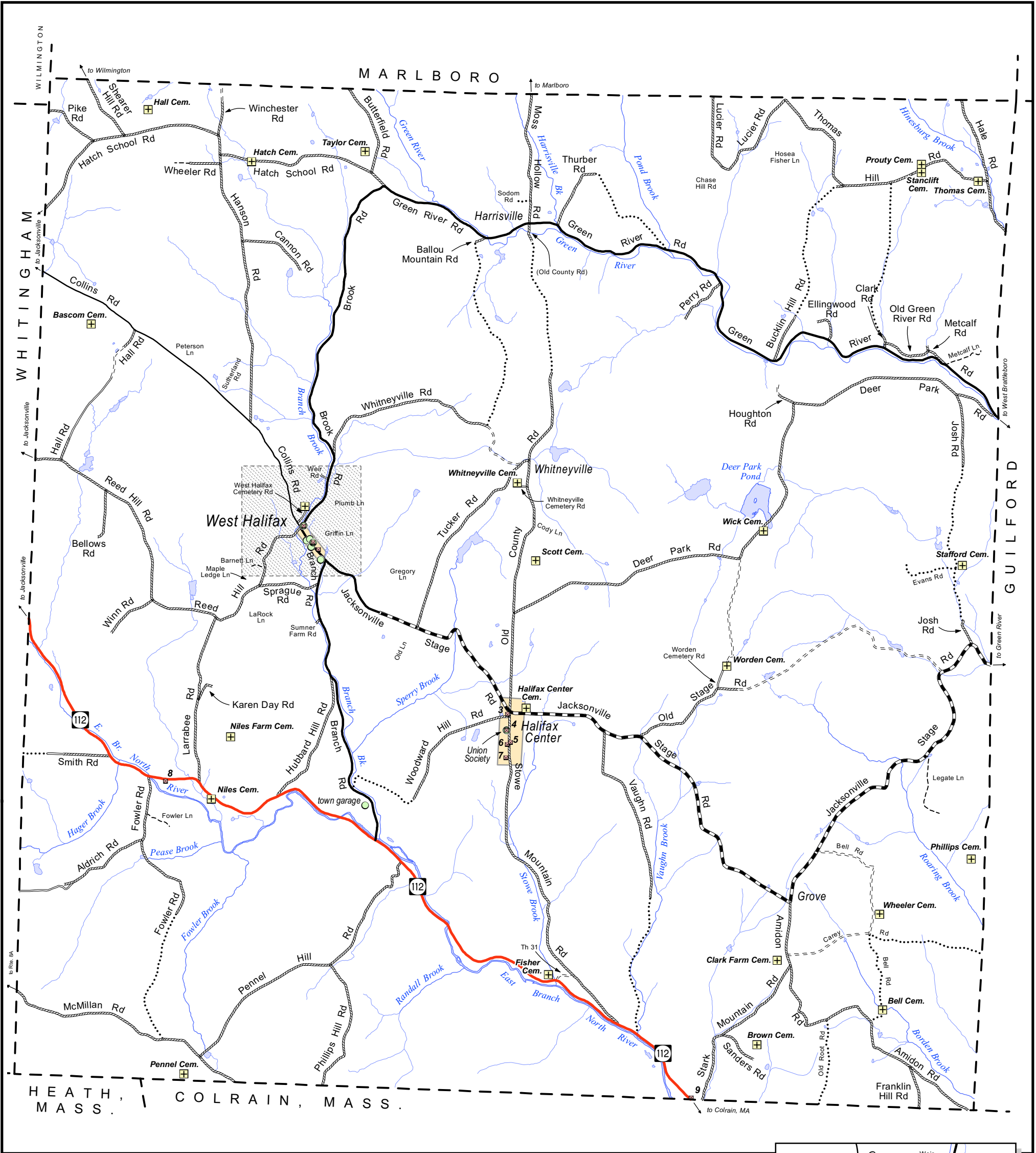
- RR** Rural Residential
- V** Village
- CN** Conservation

Primary structure

- Stream
- River or pond



Data sources:
- Proposed land use district boundaries were initially digitized in 1993 by WRC based upon the then-current Town of Halifax Zoning Regulations (March 2, 1993). The conservation district boundary was updated in 2013.

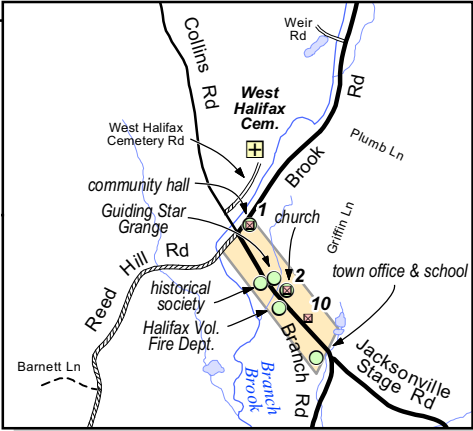


Town Facilities and Transportation

Town of Halifax, Vt.
October 2018

- Cemetery
- Historic site/structure
- Community facility
- Historic center *
- * - Town of Halifax designation

- Historic site/structure:
1. West Halifax Community Hall
 2. West Halifax Bible Church
 3. Crosier Store
 4. Halifax Union Society
 5. Scott House
 6. Charlie Learnard House
 7. Elijah P. Green House
 8. Stone's Farm
 9. Jedediah Stark House
 10. Miner House



Data sources:

- Highway data are from Vt. Agency of Transportation (VGIS data layer RDS), 2018.
- Cemeteries were digitized by WRC from 1:5000 orthophotos.
- Community facilities were identified by the Halifax Planning Commission. Data are current to 2018.
- Historic sites on this map include those listed on the Vermont State Register of Historic Places. Data on these sites were developed by WRC using 1:5000 orthophotos and E911 data (VGIS data layer ESITE).
- Historic sites on this map include those listed on the Vermont State Register of Historic Places.
- Historic areas were taken from Town of Halifax Zoning Regulations, March 2, 1993.

- State highway
- Class 2 town highway - paved
- Class 2 town highway - (unpaved)
- Class 3 town highway - paved
- Class 3 town highway - unpaved
- Class 4 town highway (unpaved):
- passable
- impassable
- Legal Trail (generally impassable)
- Private road/drive
- Stream
- River or pond

